

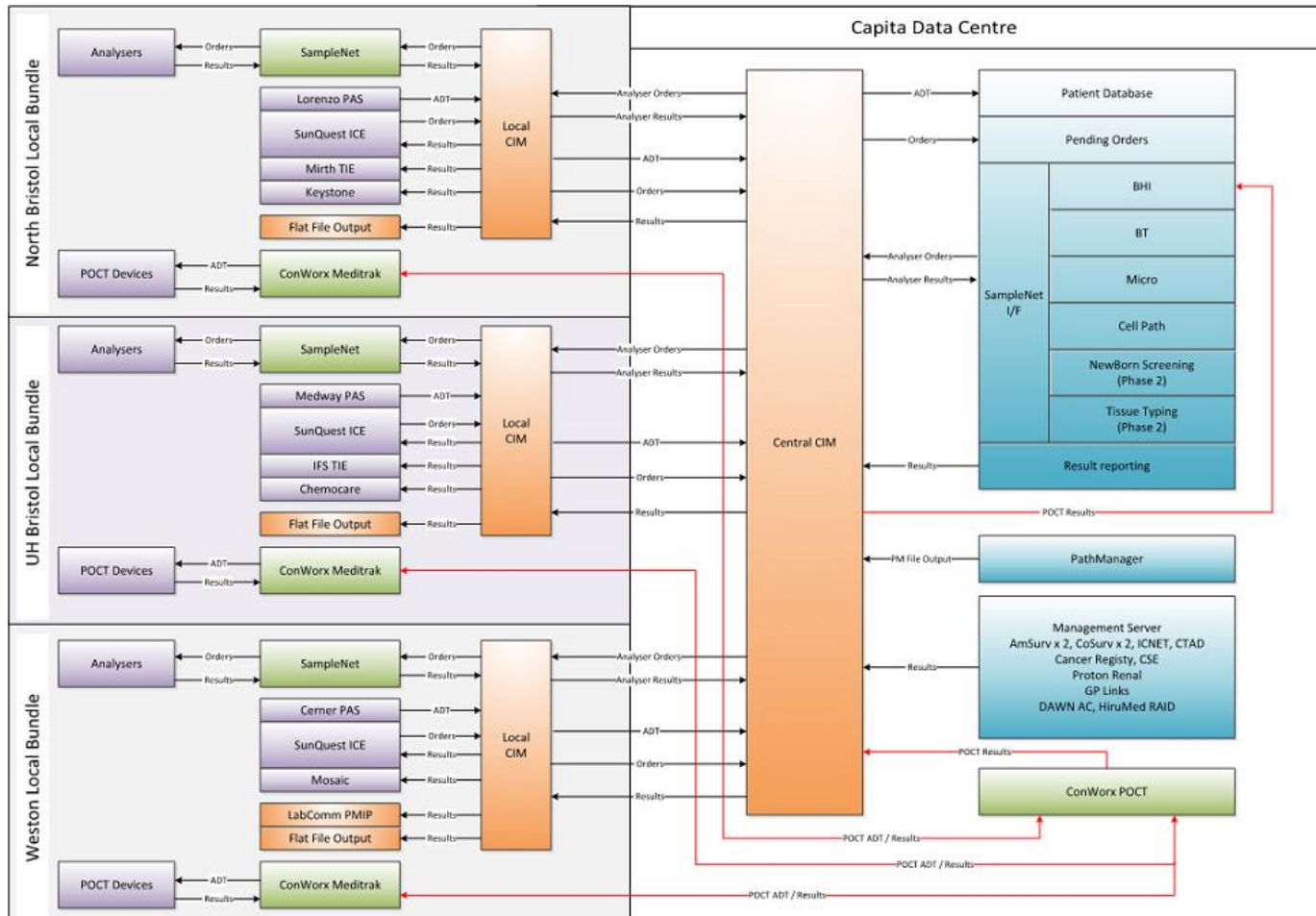
Connecting Laboratory Services in the South West with NPEX

David Gibbs
Pathology Services Director
12th July 2017

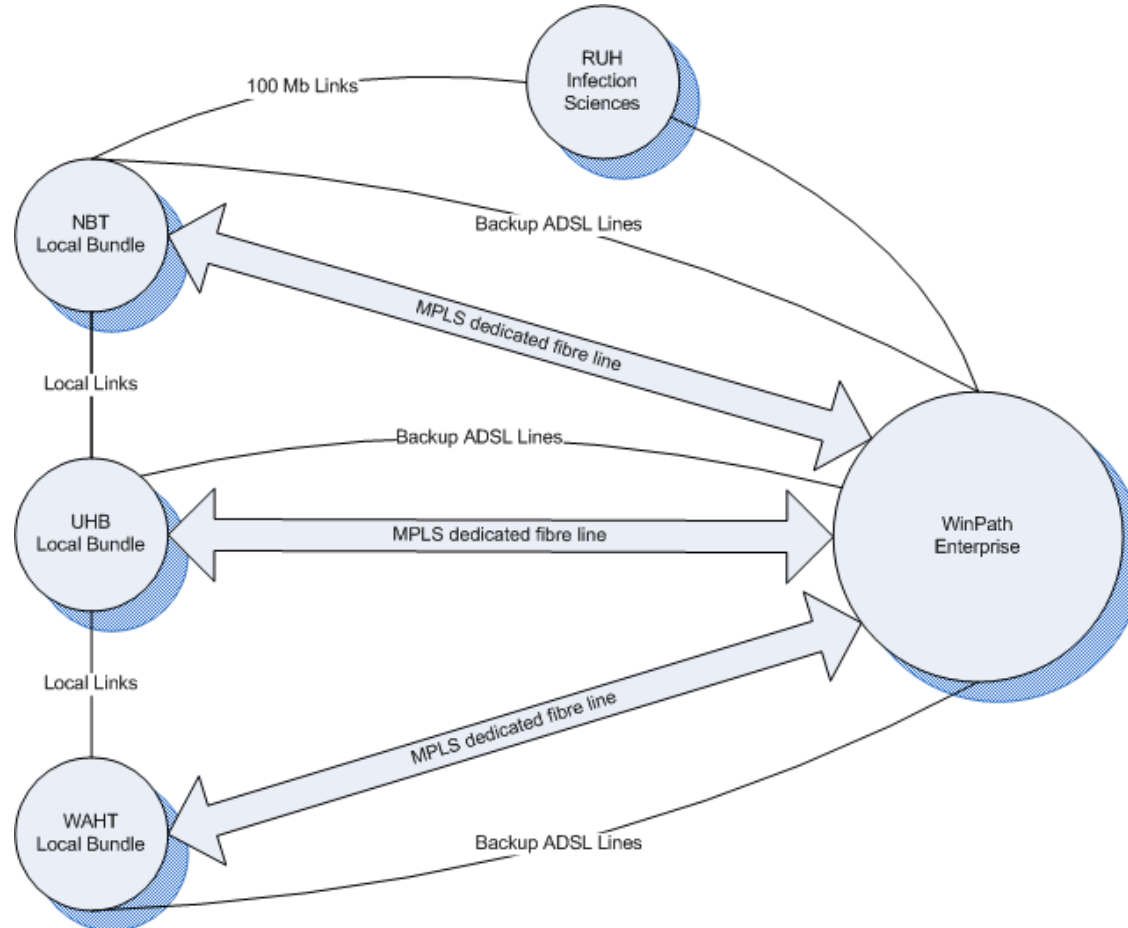
The Bristol LIMS Solution

- NBT & PHE – Severn Pathology
- UHBristol – Independent Blood Sciences and Blood Transfusion
- Weston – Small fully independent whole pathology service
- RUH Bath – Infection Sciences only, provided by PHE

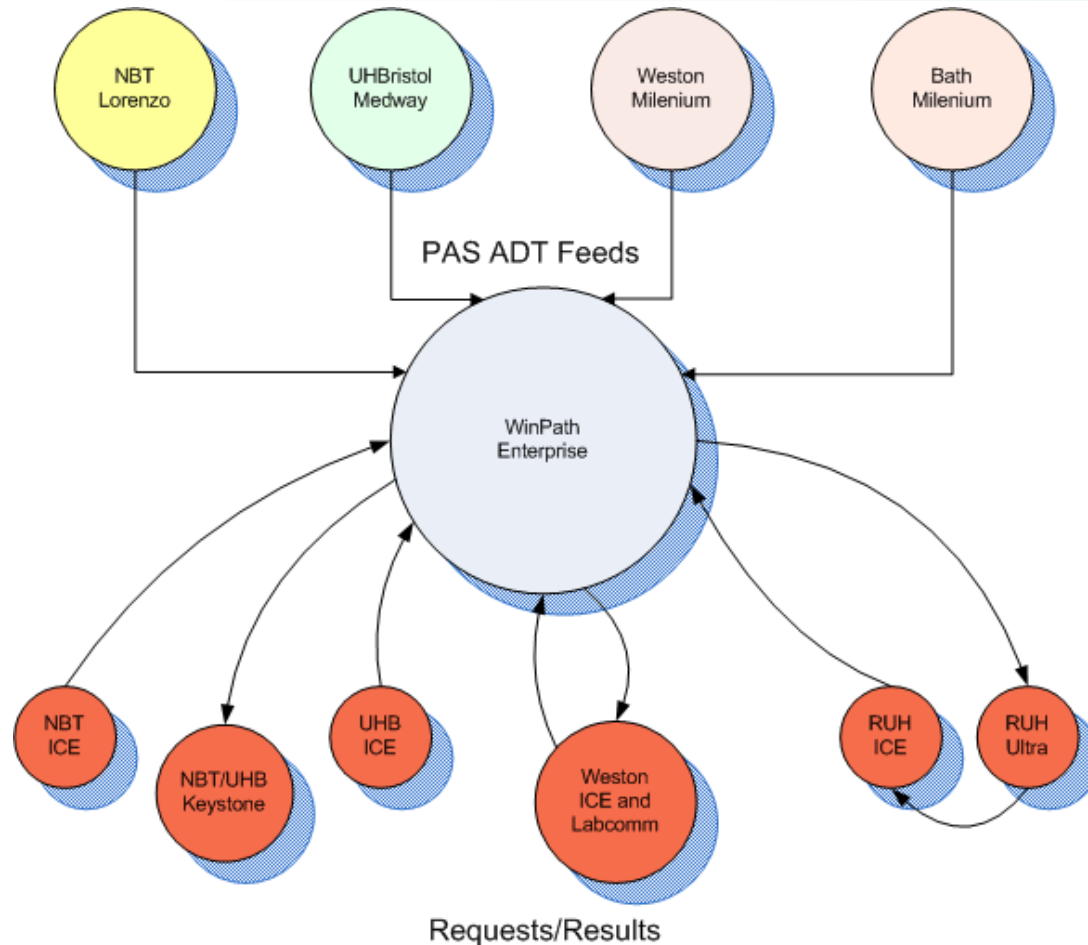
What does it look like?



Network Resilience



Patient Data Pathways



Scale and Complexity

- 3 Different PAS systems
 - 3 Independent ICE systems
 - 2 Different GP reporting systems
 - 32 CIM connections
 - 62 Samplenet connections
 - 158 Analysers not including POCT
 - Separate ADT feed for POCT system
 - 2 Different TIE's
 - 2 Different cancer management systems
 - Greater than 14 million messages in the first three weeks
-

Severn Pathology

- Blood Sciences – 7000 samples/day
- Immunology including Tissue Typing and SIHMDS
- Infection Sciences in collaboration with PHE – providing service to all of Bristol and Bath
- Cellular Pathology – Combined service for NBT and UH Bristol

The Buildings



Severn Pathology

The Laboratories



Reference Laboratory

- Providing specialist services regionally and nationally
 - Immunology
 - The Specialist Integrated Haematological Malignancy Diagnostic Service (SIHMDS)
 - Regional virology service
 - Regional cytology service (inc. Primary HPV)
 - National antimicrobial assay service
 - National mycology service

Issues

- Bristol LIMS included an NPEX interface but not NPEX costs
- Not used widely within region
- Interfaces not available/costly for other LIMS systems
- No capital for set-up/licence costs
- Most have same MES supplier and are working collectively for benefit

Solution

- Using existing TIE data for NPEX to plug in where LIMS costs are high
- Working together at the same time to delivery benefits that out way costs
- Use MES supplier to deliver the system removing the need for capital

Thank you

David Gibbs
Pathology Services Director
david.gibbs@nbt.nhs.uk

