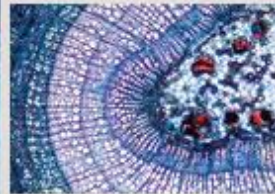
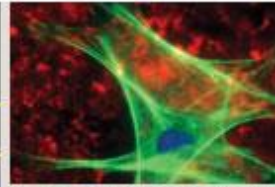


empath



# Antenatal Reporting using NPex

Steve Davidson

General Manager for PMO & Transformation

## Key Issues

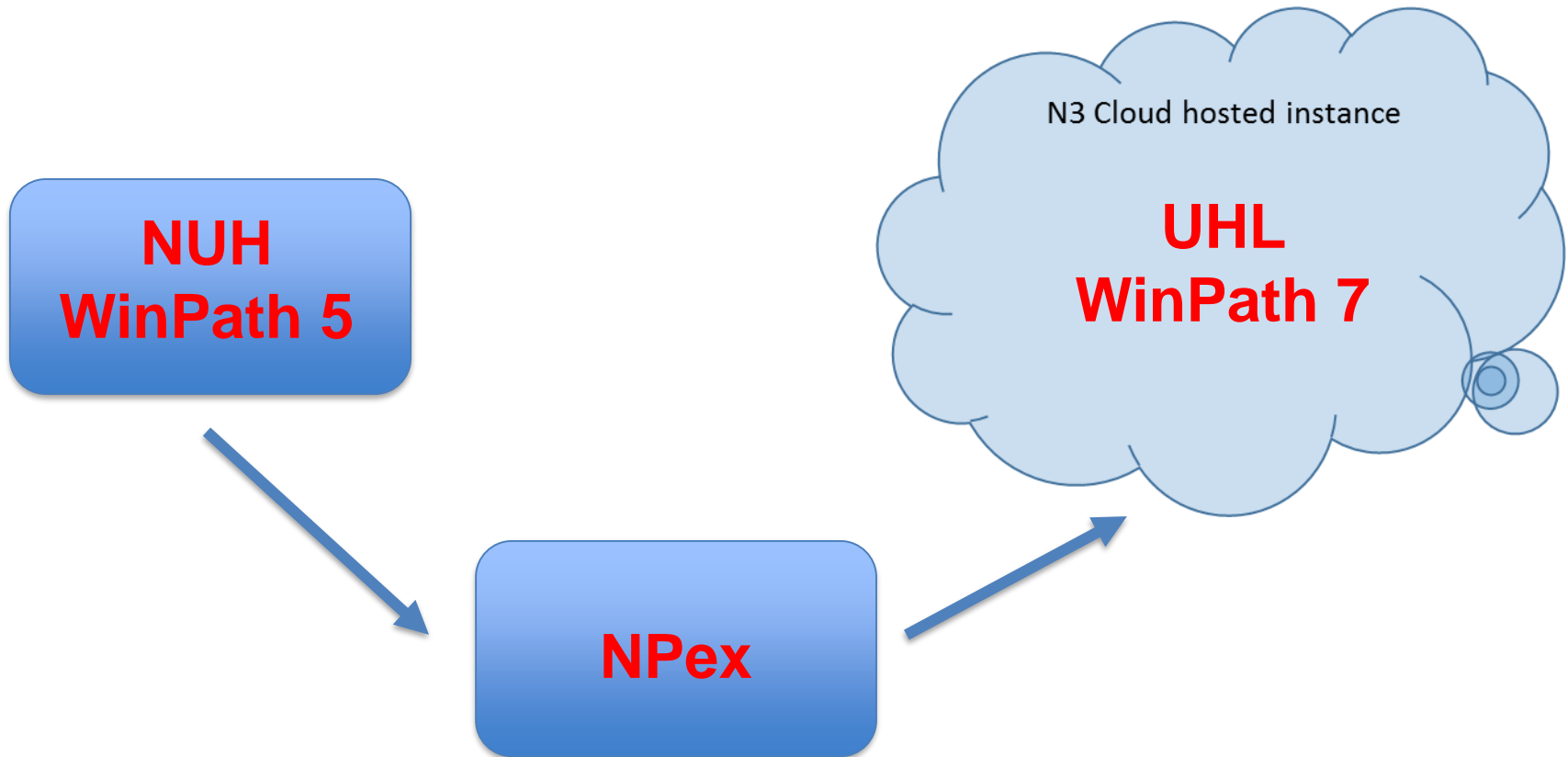
- Women at risk of bleeding require Group & Save (G&S) testing.
- Two samples required to enable Blood Transfusion:
  - One sample needs to be less than 72 hours old.
  - “Historic” sample to act as a double check for the blood group.
- Samples taken by the Antenatal Team on the LRI Campus and processed on the QMC Campus.
  - **No booking-in** undertaken for these samples at the LRI.
- No electronic reporting – WinPath Path Manager data warehouse.
- Over testing by clinical staff.

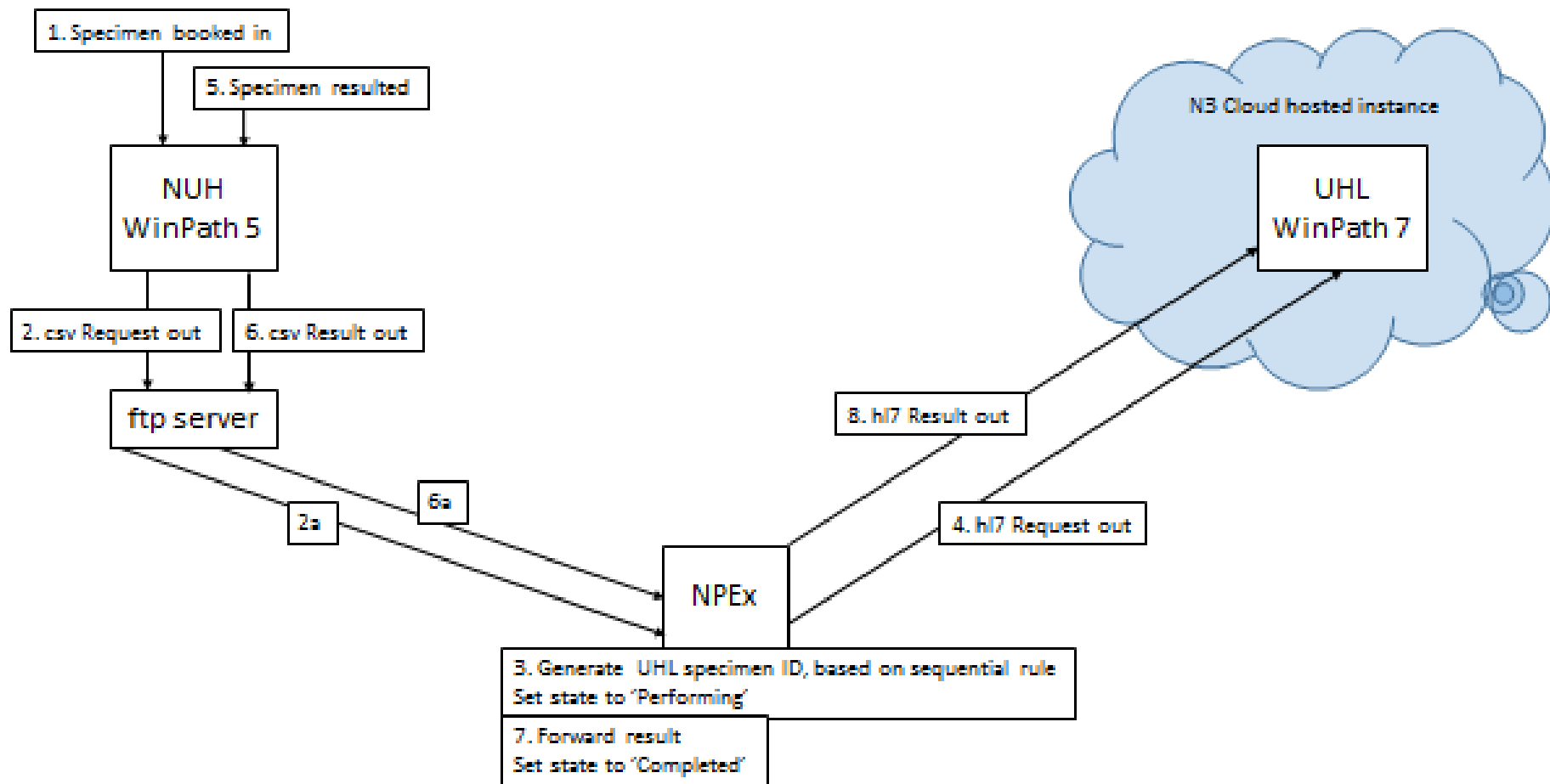
## Opportunity

- Approximately 10,600 births per annum.

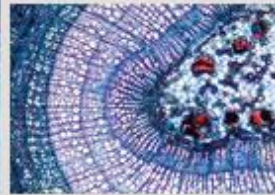
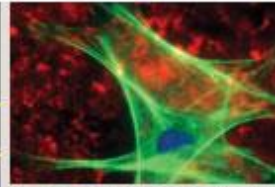
Volume	Description – Avoidable Group & Save (G&S) Samples
4,171	Theatre Elective or Emergency procedures.
584	Relating to theatre activity.
1,929	Women not transferred to theatre (30% of non-theatre admissions).
<b><u>6,684</u></b>	<b>Total annual G&amp;S sample reductions</b>

# Solution





empath



# Questions?

[steve.davidson@nuh.nhs.uk](mailto:steve.davidson@nuh.nhs.uk)

(0115) 8405895